

When ordering spare parts, always state:  
MODEL-QUANTITY-PART NUMBER-DESCRIPTION

For electric details, also state:  
VOLTAGE-WATTAGE



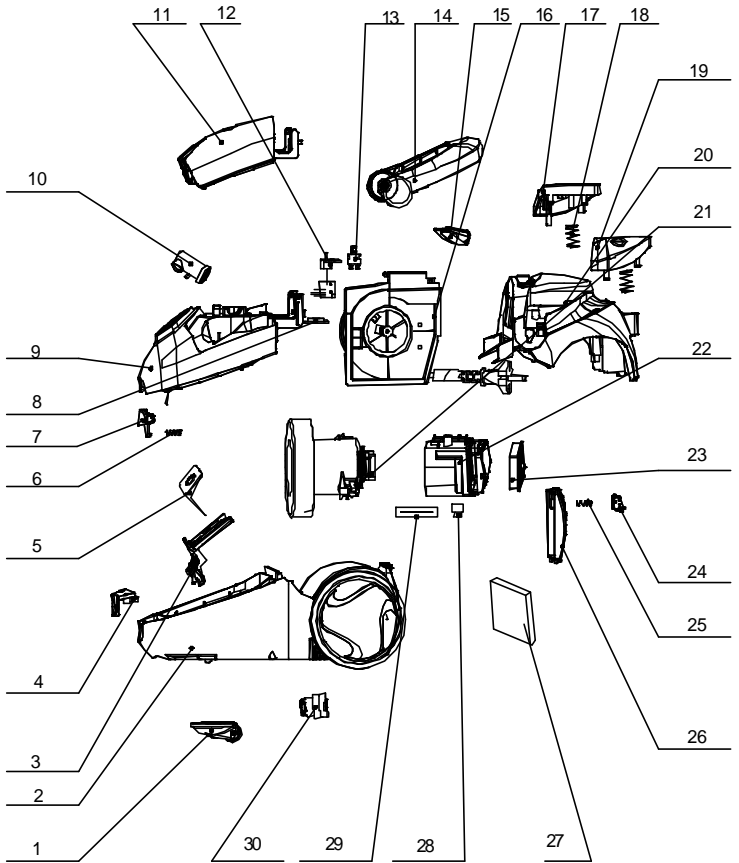
## SPARE PARTS LIST

# U4710

SUCTION CLEANER

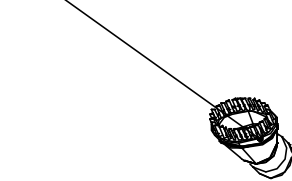
EDITION No. 1

JANUARY  
2009



ITEM No.	PART No.	DESCRIPTION
1	A0050030043R	CASTOR WHEEL ASSEMBLY
2	B1320750609R	BASE ASSEMBLY
3	B1320730605R	DUST BAG HOLDER ASSEMBLY
4	Q132A600233	FRONT COVER PANEL
5	G1320090004	PAPER DUST BAG
6	J1320010002R	SPRING, FRONT COVER LATCH
7	P1325713938R	FRONT COVER LATCH
8	Q0395240H01	SWITCH COVER PANEL
9	B1320260605R	FRONT COVER ASSEMBLY
10	A0000680003R	DUST BAG INDICATOR
11	P1323593938R	ACCESSORY COVER
12	D2132028018R	PCB ASSEMBLY
13	D3017001001R	SWITCH
14	B1321210601R	HANDLE ASSEMBLY
15	P1326474938R	HANDLE COVER
16	A1320050009R	CORD REWIND ASSEMBLY
17	P1325210553R	CORD REWIND PEDAL
18	J0000350066R	SPRING FOR PEDAL
19	P1325130553R	ON/OFF SWITCH PEDAL
20	B1320780606R	REAR COVER ASSEMBLY
21	B1320770610R	MOTOR ASSEMBLY, (FAN UNIT)
22	B1320760604R	MOTOR COVER ASSEMBLY
23	A1320010008R	HEPA EXHAUST FILTER ASSEMBLY
24	<b>N.S.S.</b>	LATCH, EXHAUST GRILLE, PART OF ITEM 26
25	<b>N.S.S.</b>	LATCH SPRING, EXHAUST GRILLE, PART OF ITEM 26
26	B1320430609R	EXHAUST FILTER GRILLE ASSEMBLY
27	G1320040001	MOTOR PROTECTION FILTER
28	X0531280001R	CORD GROMMET
29	X1320440003R	PCB GASKET
30	A0000430048R	RELIEF VALVE ASSEMBLY

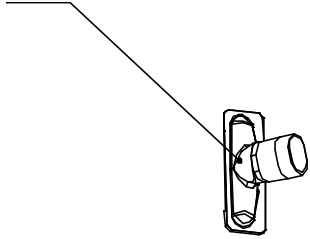
31



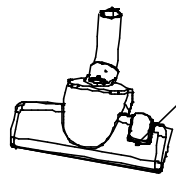
36



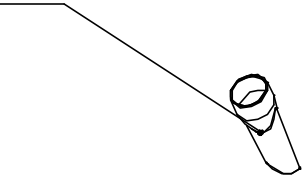
32



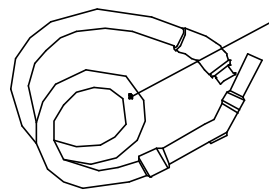
35



33



34



ITEM No.	PART No.	DESCRIPTION
31	F0871200020	DUSTING BRUSH, 11.0
32	F0980900008	UPHOLSTERY NOZZLE, 10.0
33	S8710250233	CREVICE NOZZLE, 29.0
34	A000202Z080R	HOSE ASSEMBLY
35	F111A900006R	COMBINATION FLOOR NOZZLE, 35.0
	F1114900006R	HARD FLOOR NOZZLE, 27.0
36	B1320350606R	TELESCOPIC TUBE ASSEMBLY